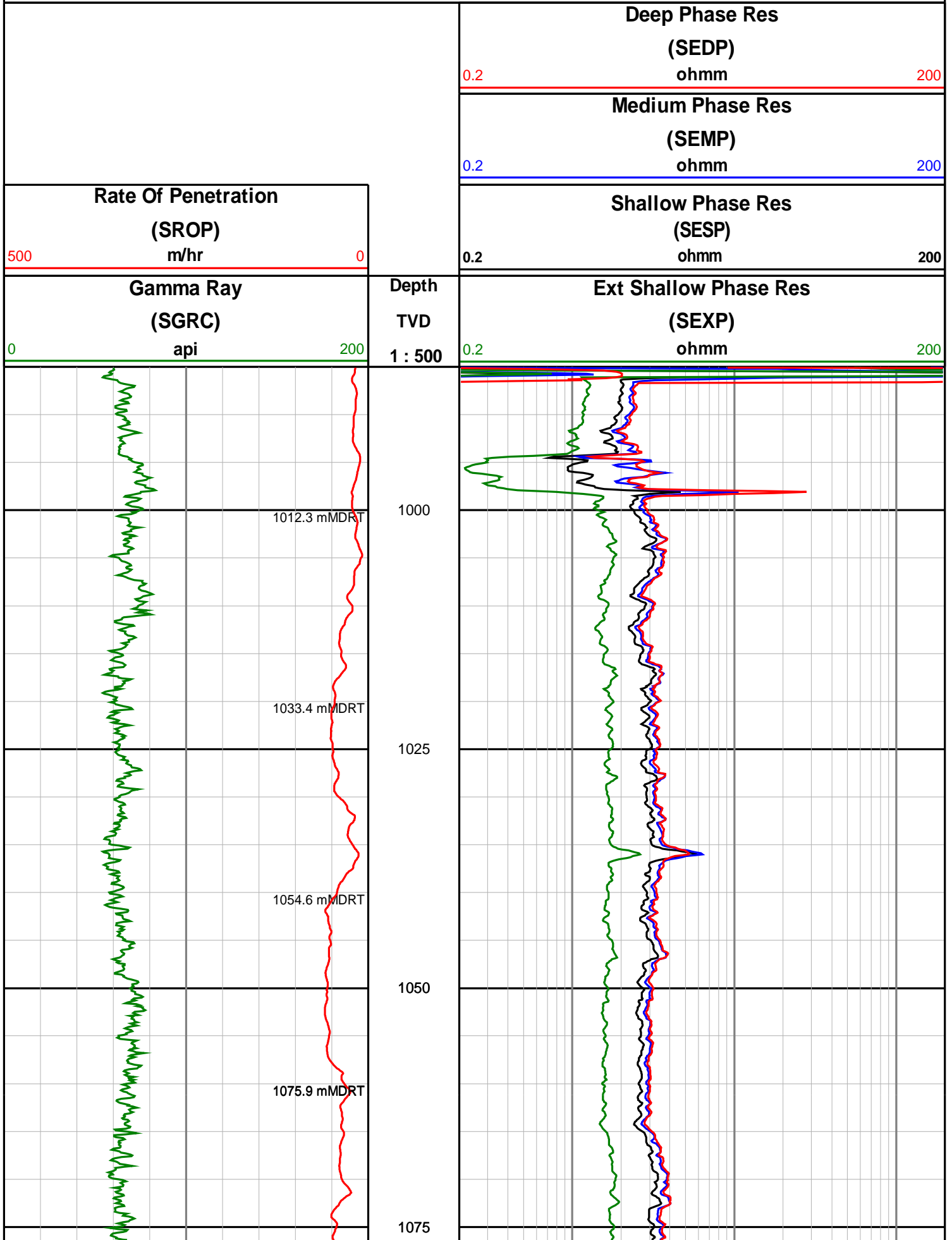
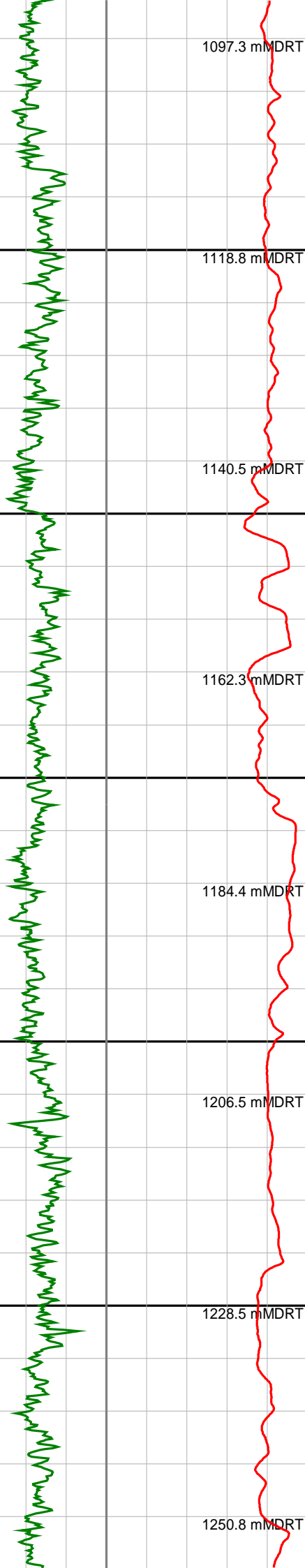


# Anzon Australia Ltd

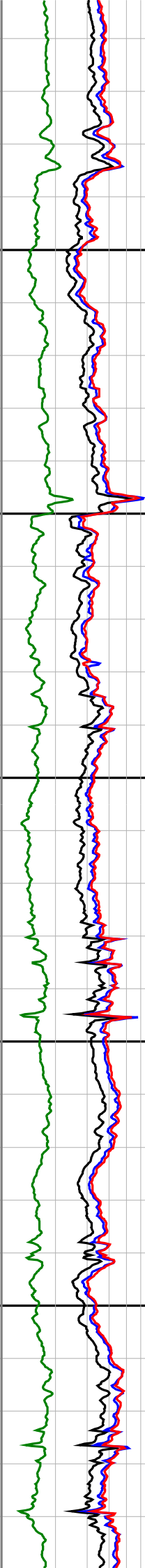
## Basker-4

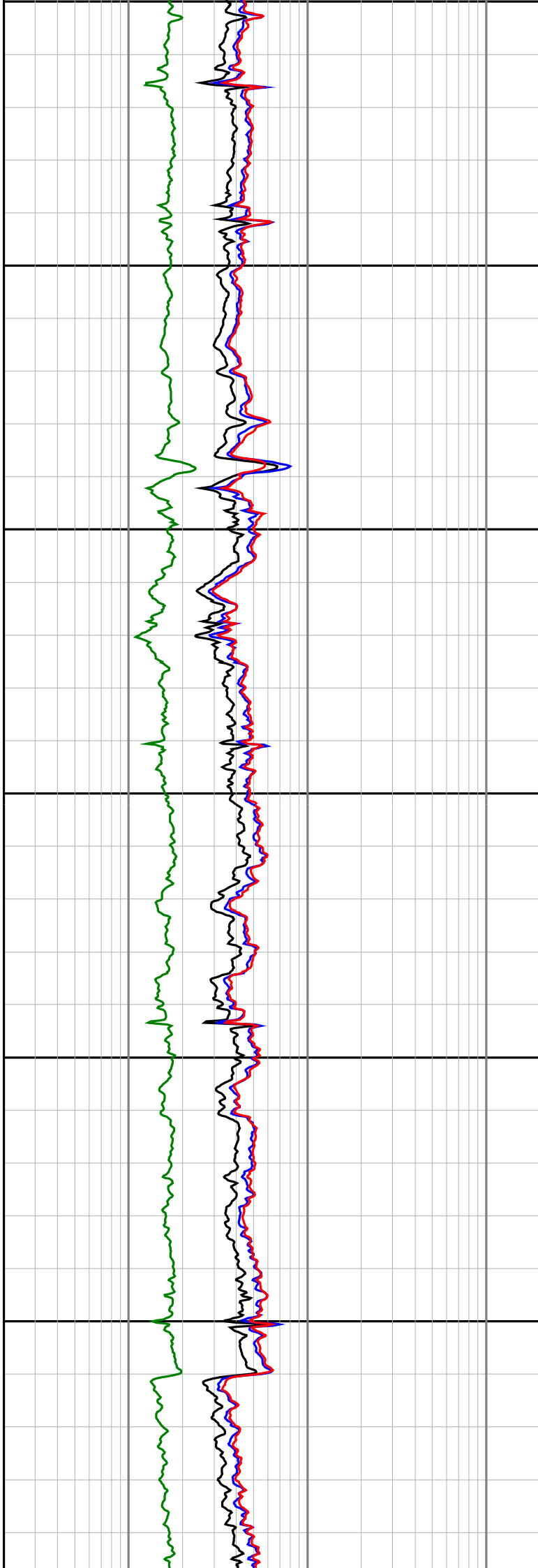
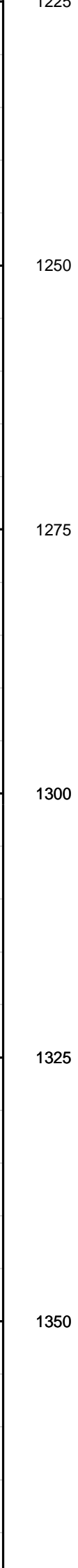
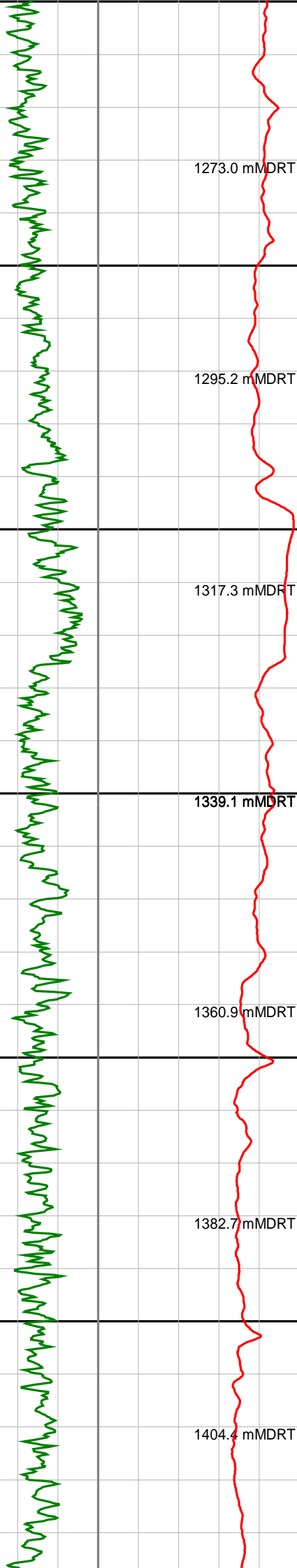
### Recorded LWD Log (Permanent Datum - LAT)

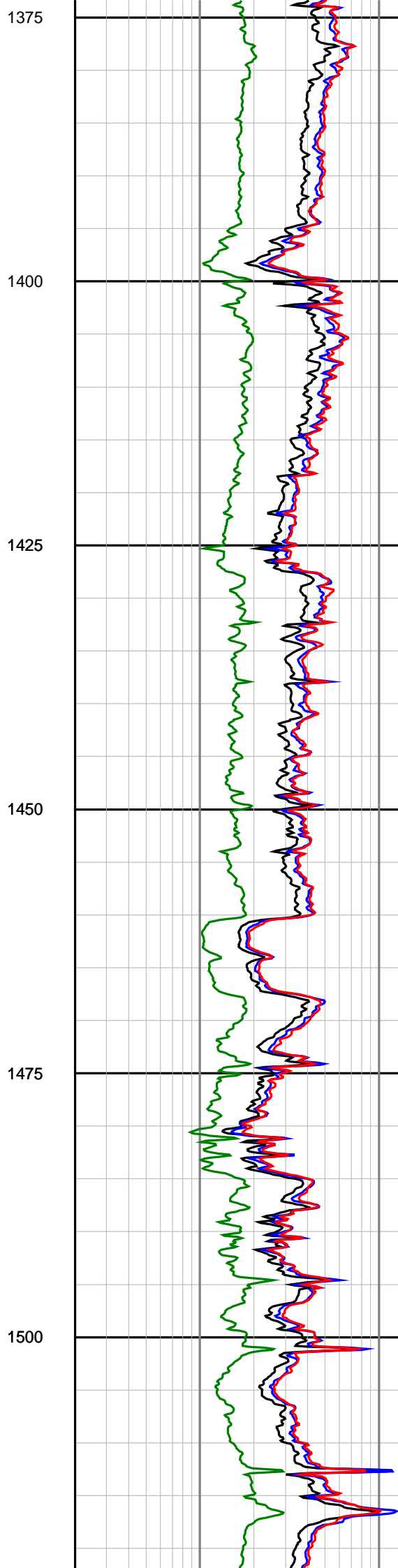
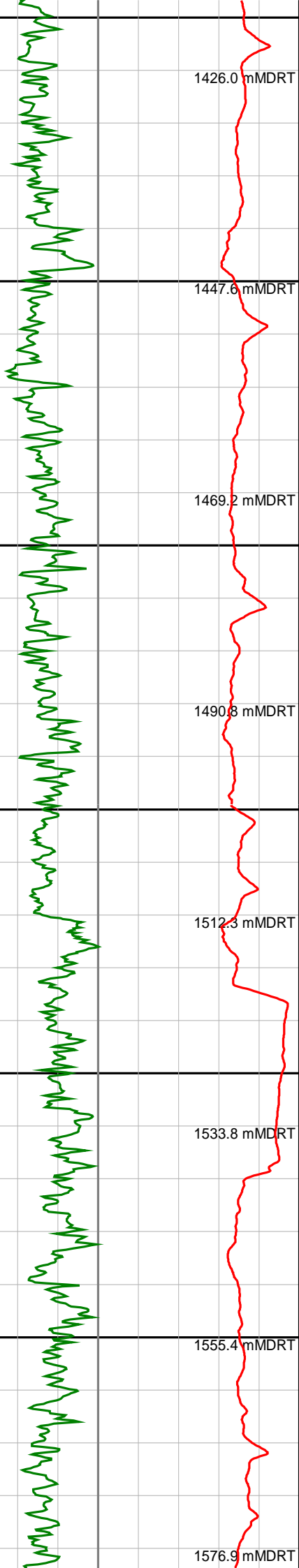


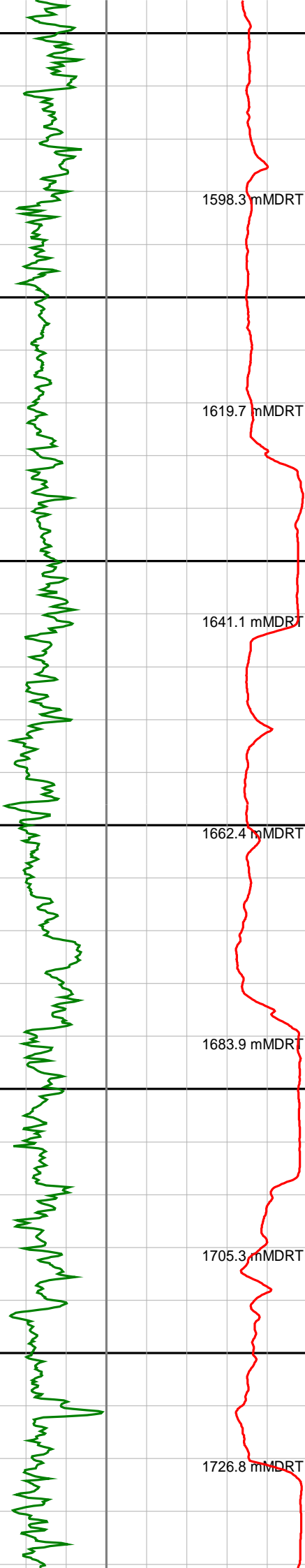


1100  
1125  
1150  
1175  
1200  
1225









1598.3 mMDRT

1619.7 mMDRT

1641.1 mMDRT

1662.4 mMDRT

1683.9 mMDRT

1705.3 mMDRT

1726.8 mMDRT

1525

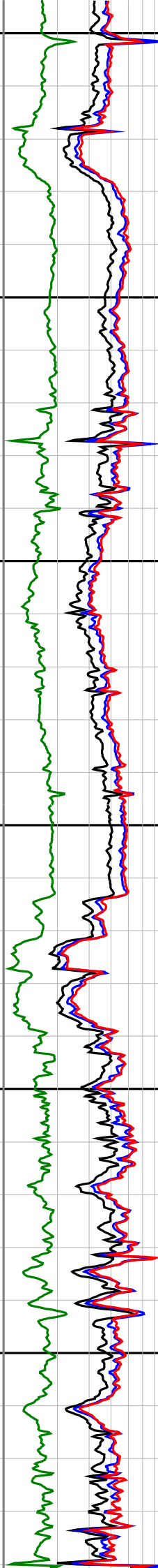
1550

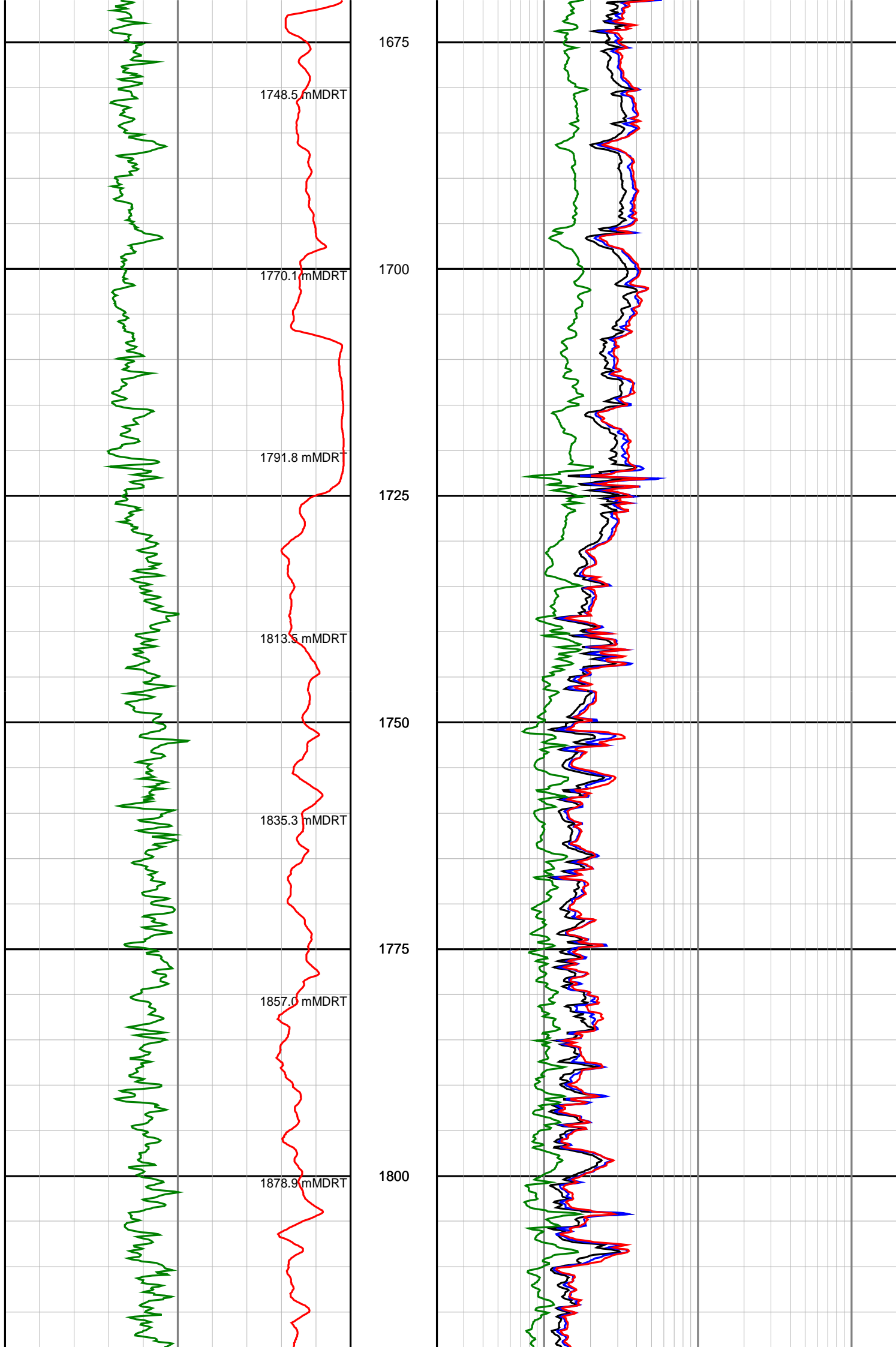
1575

1600

1625

1650





1900.6 mMDRT

1922.3 mMDRT

1944.0 mMDRT

1965.6 mMDRT

1987.2 mMDRT

2008.8 mMDRT

2030.4 mMDRT

2052.1 mMDRT

1825

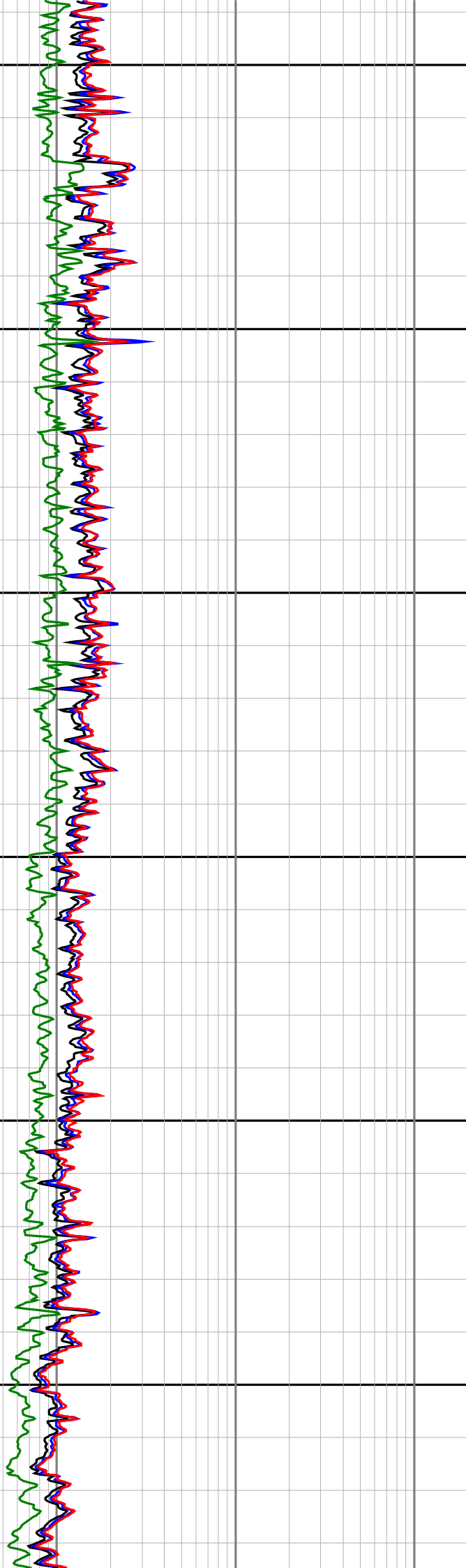
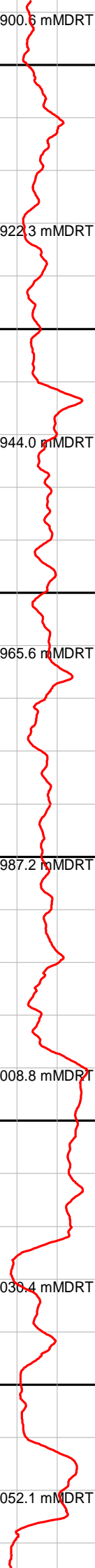
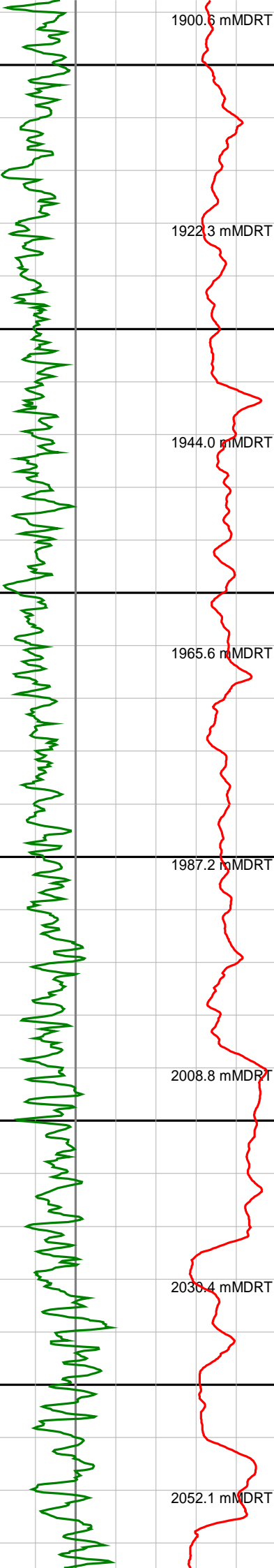
1850

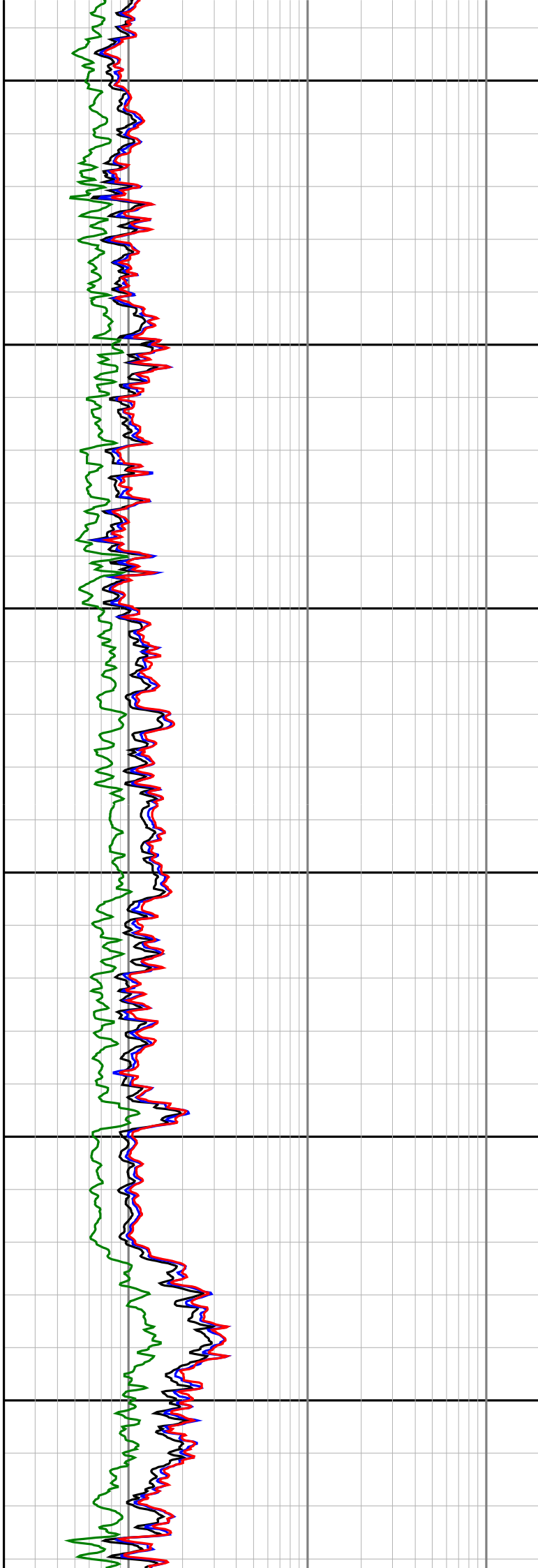
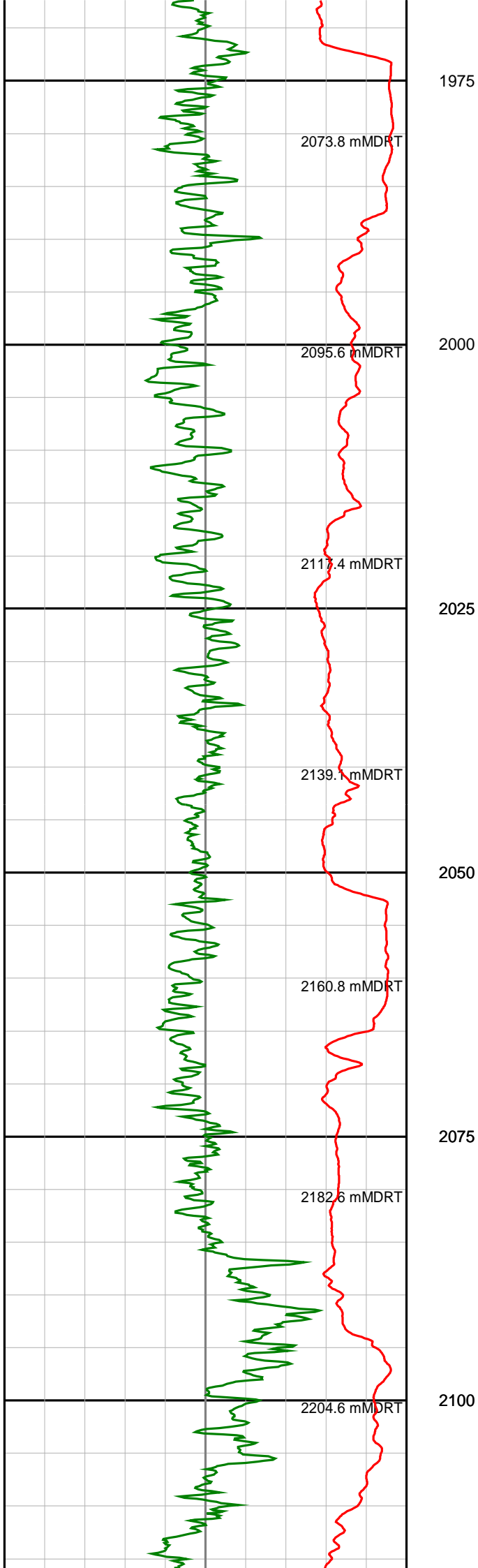
1875

1900

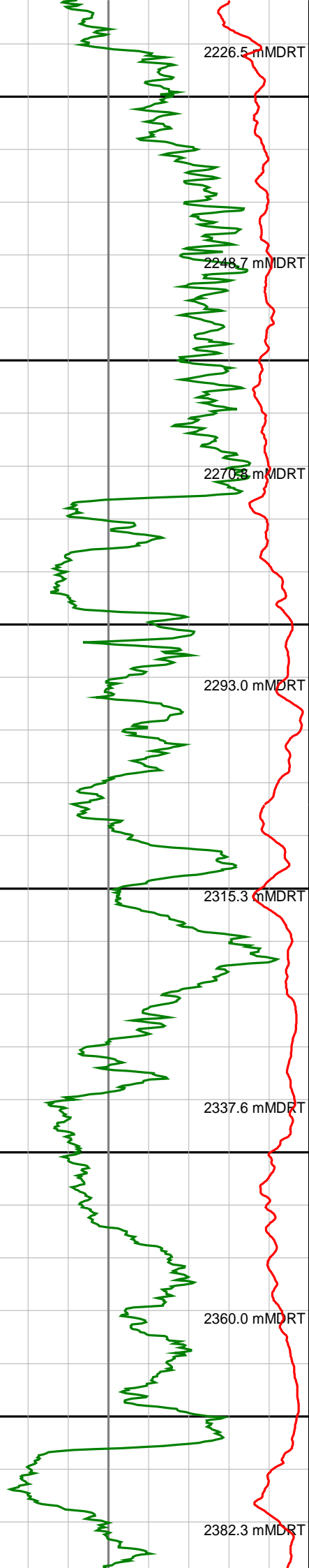
1925

1950









2125

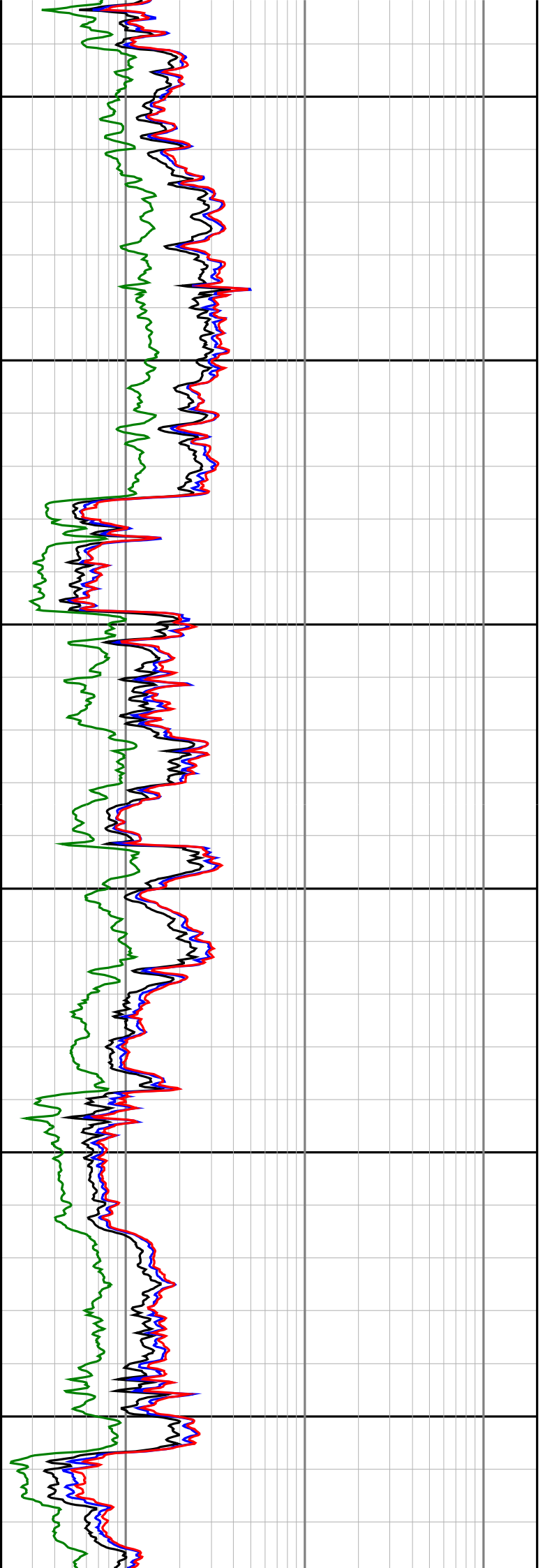
2150

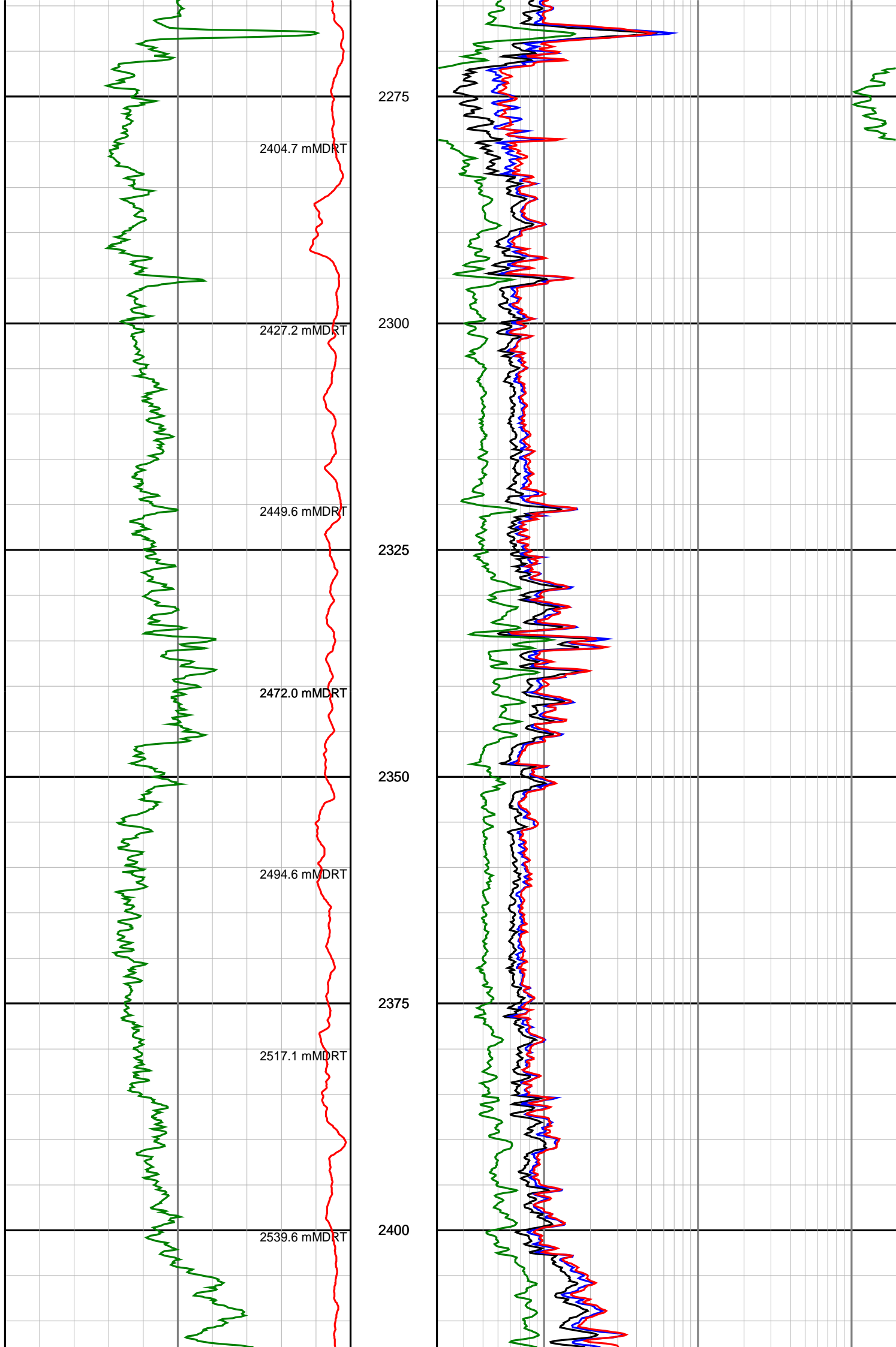
2175

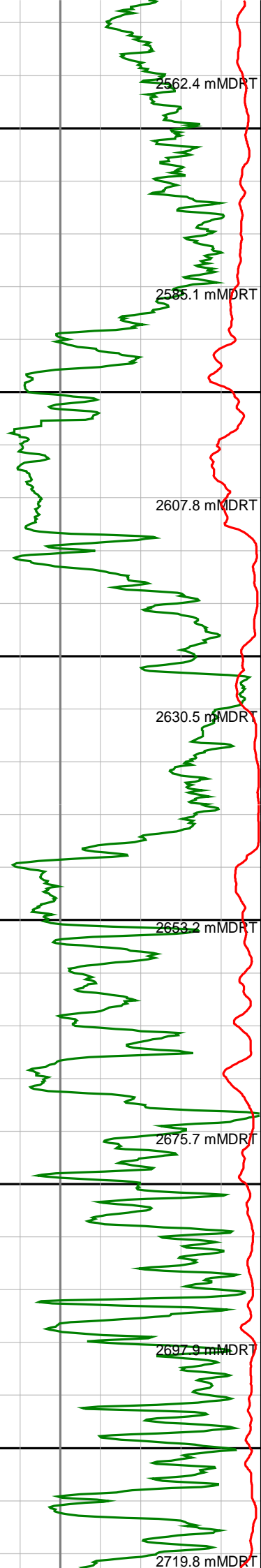
2200

2225

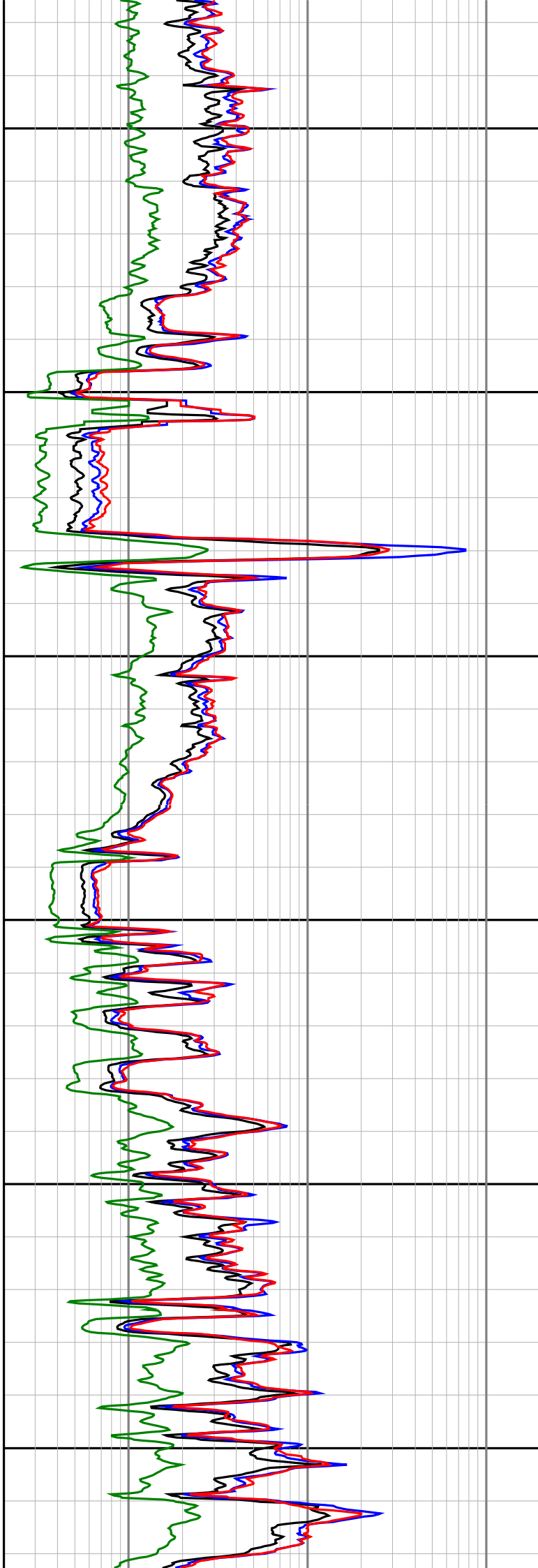
2250

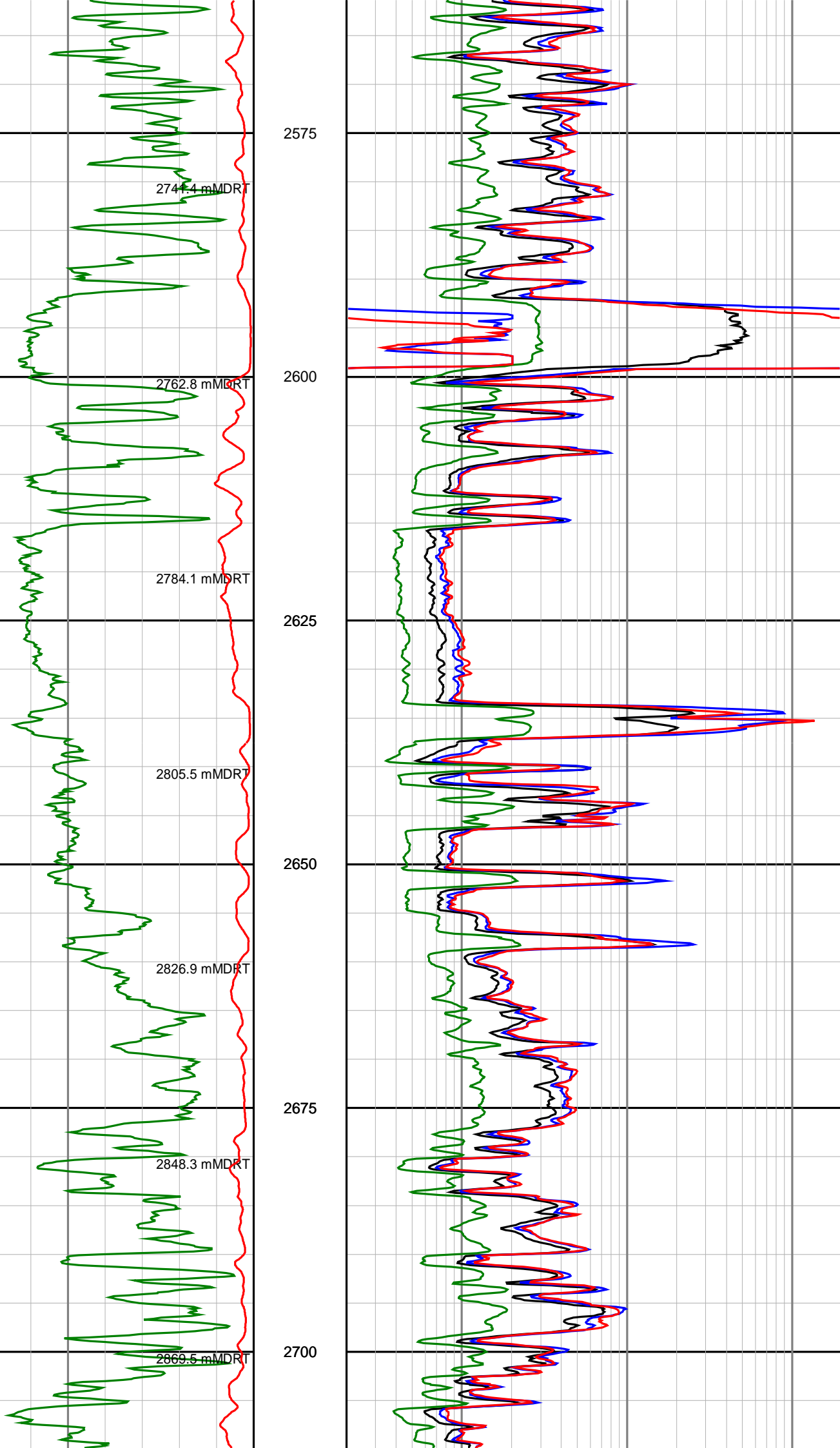


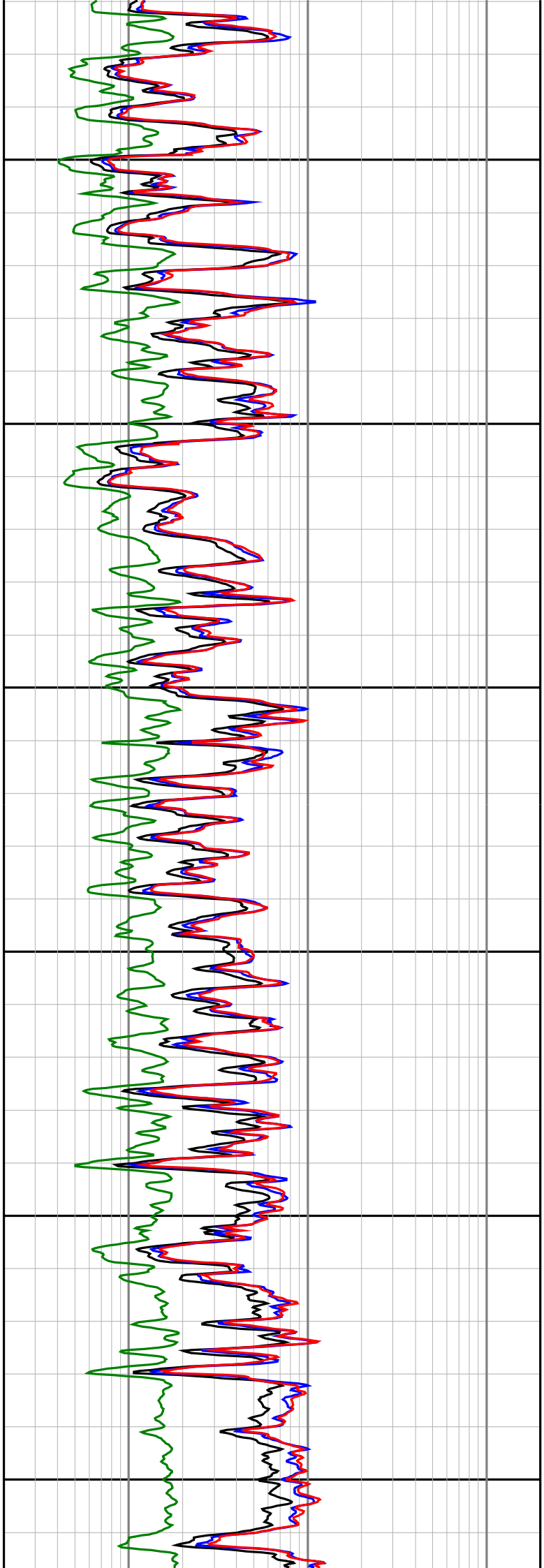
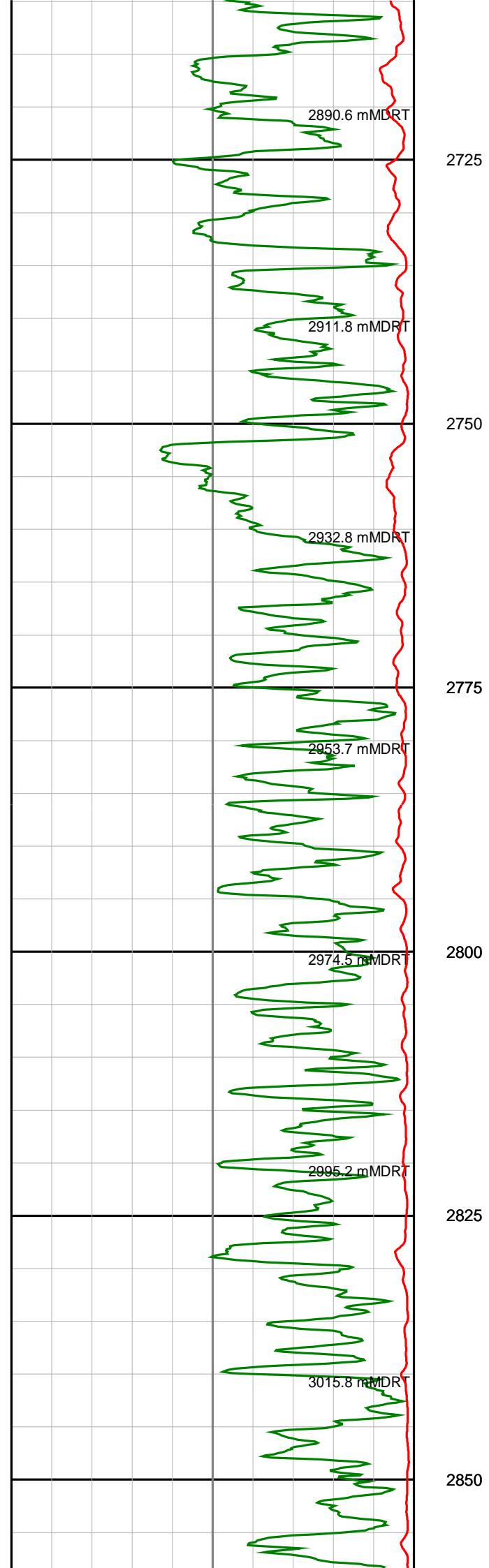


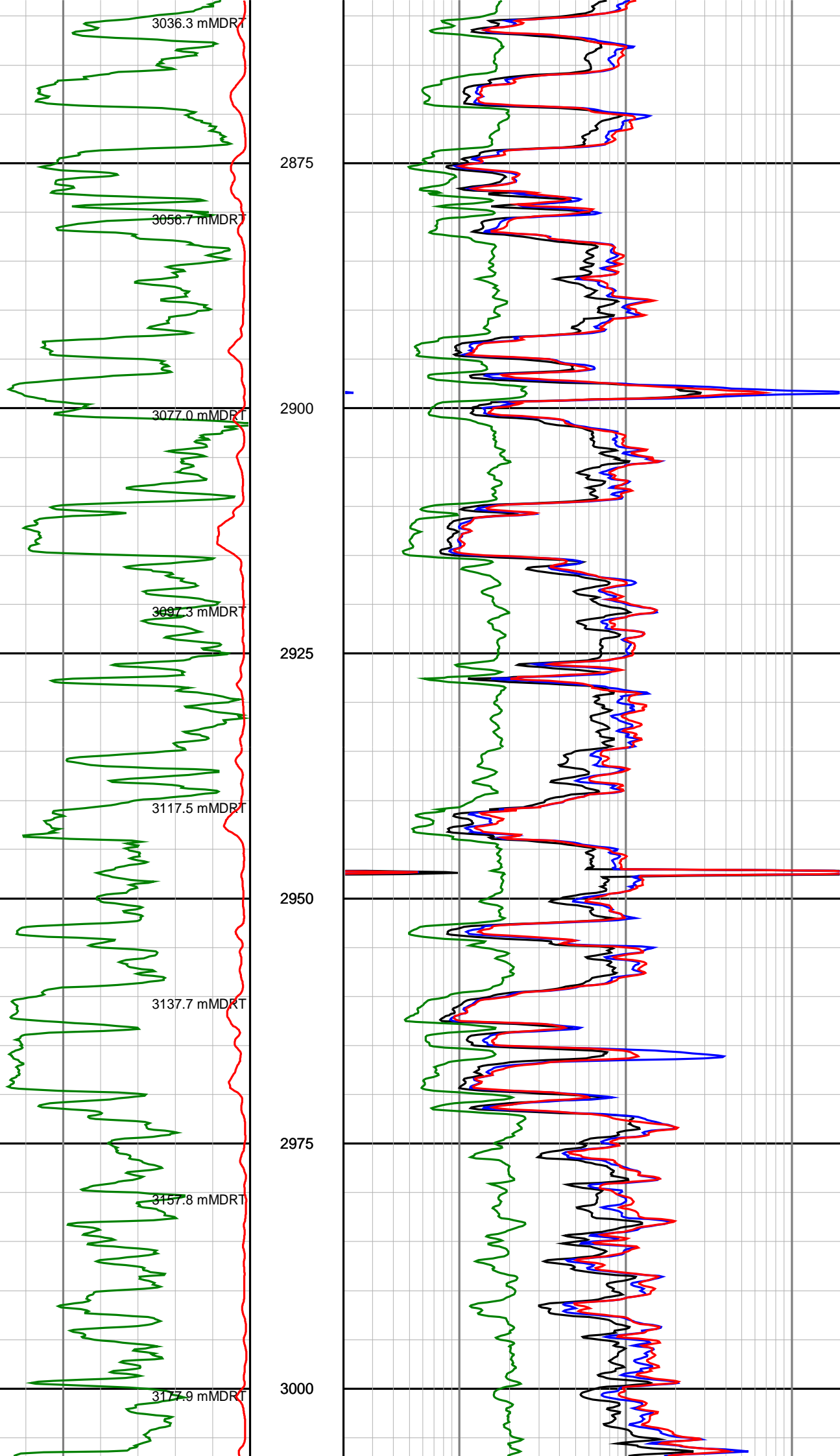


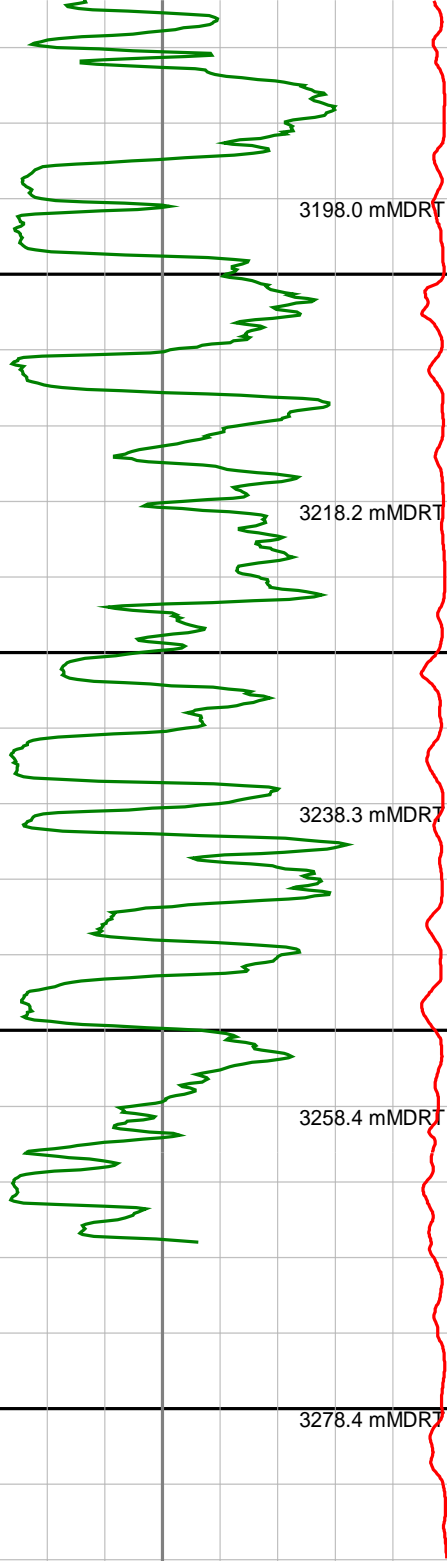
2425  
2450  
2475  
2500  
2525  
2550



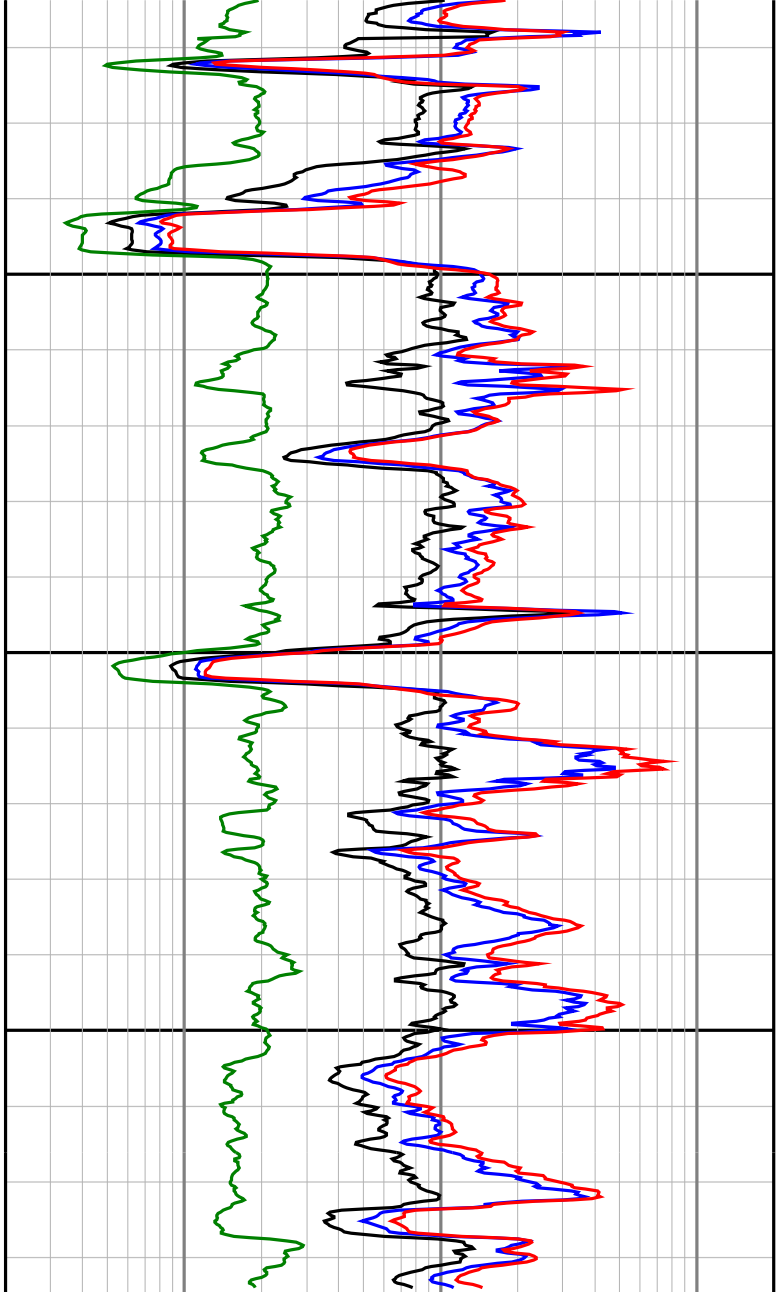








3025  
3050  
3075  
3100  
3125



**Gamma Ray  
(SGRC)**  
api

**Rate Of Penetration  
(SROP)**  
m/hr

**Depth  
TVD**  
1 : 500

**Ext Shallow Phase Res  
(SEXP)**  
ohmm

**Shallow Phase Res  
(SESP)**  
ohmm

**Medium Phase Res  
(SEMP)**  
ohmm

**Deep Phase Res  
(SEDP)**  
ohmm

